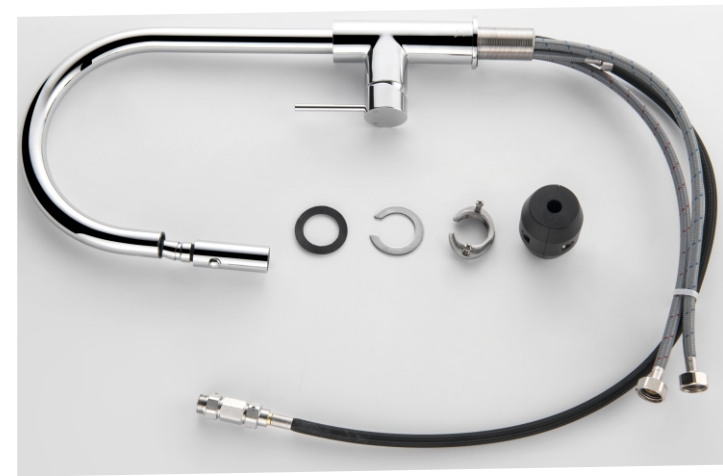
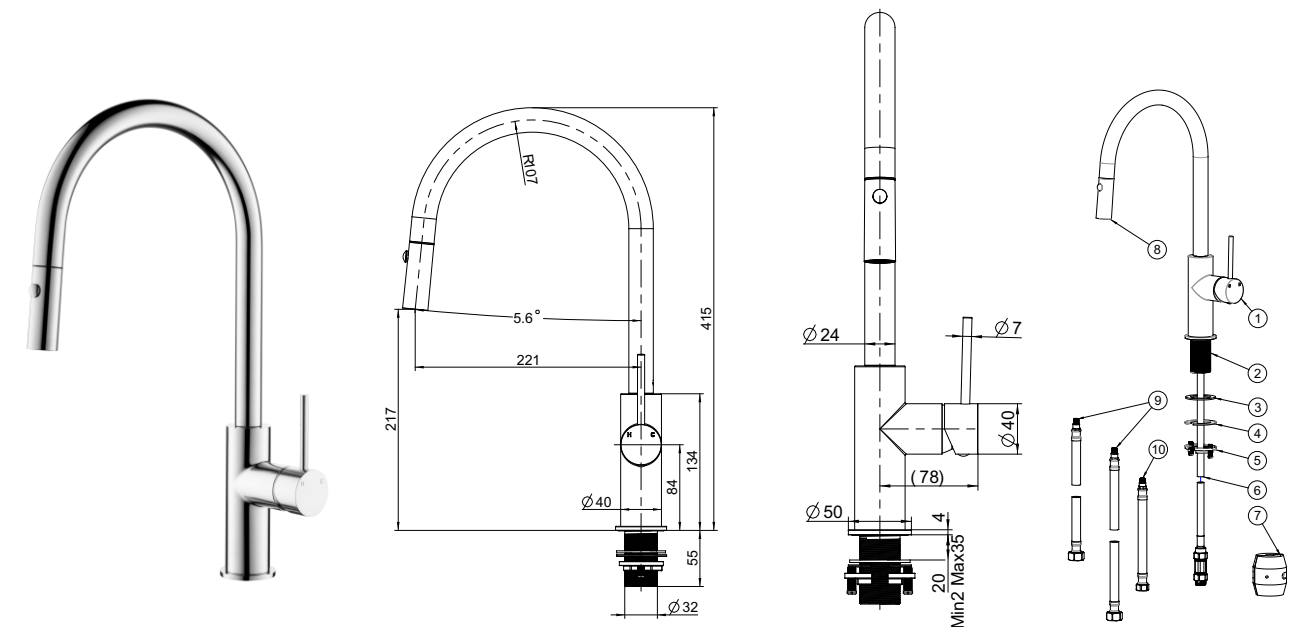


# Installation Manual

## Pull-out Sink Mixer



NO.	Description	QTY
1.	Main body	X1
2.	Thread sleeve	X1
3.	Washer	X1
4.	Gasket	X1
5.	Locking nut	X1
6.	pull-out hose	X1
7.	Gravity ball	X1
8.	Hand piece	X1
9.	inlet hose	X2
10.	outlet hose	X1

### General information

- 1.Prior to installing a tap, all pipes leading to the product must be flushed clean.
- 2.Products are manufactured as per standard AS/NZS 3718:2021 and with WaterMark & WELS certificate as shown in the packing.
- 3.All surfaces should be cleaned with water or mild liquid detergent.  
Do not use cream cleaner or citrus based or chemical cleaning products.

### Warranty Terms

- All products are guaranteed as below:
1. 5 years guarantee against main body, finishing and Cartridge.
  2. 2 years guarantee on washers and O-rings.



recommended  
working pressure

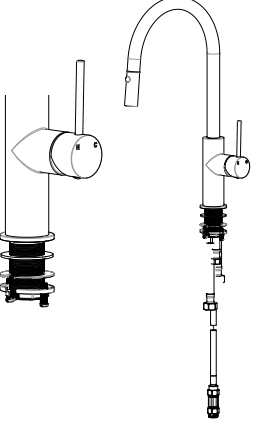
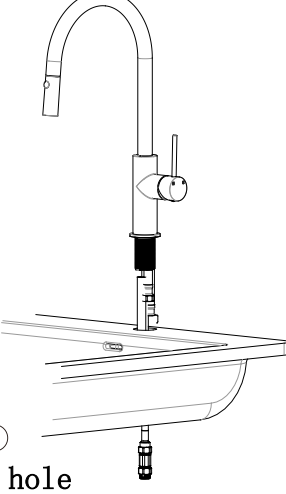
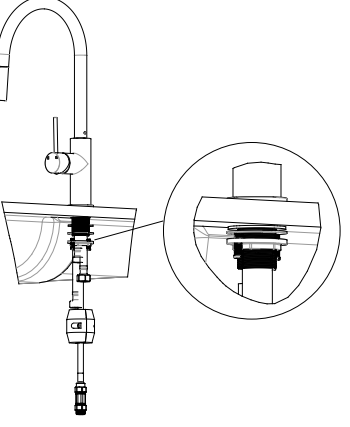
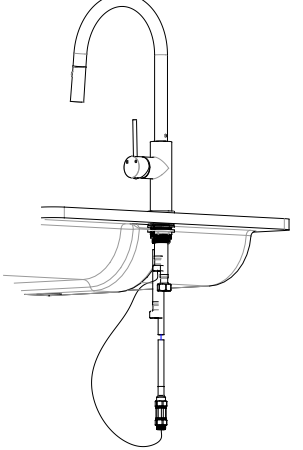
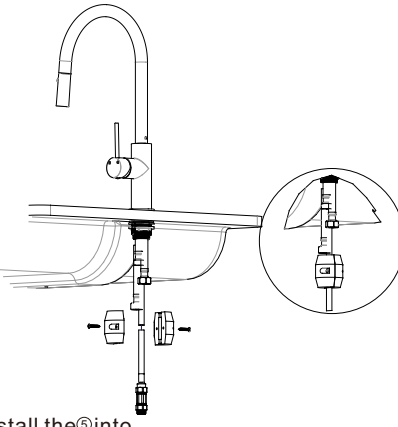
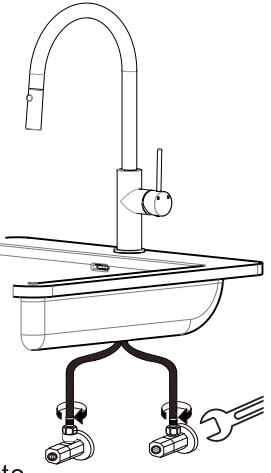
0.05-1  
MPa



maximum hot  
water temperature

55  
degrees

# Installation Instruction

<p>Step 1</p>  <p>Take off ⑤ ④ ③ from ②</p>	<p>Step 2</p>  <p>Insert ① into the hole</p>	<p>Step 3</p>  <p>Install and fix ③ ④ ⑤</p>
<p>Step 4</p>  <p>Connect ⑥ to ⑩</p>	<p>Step 5</p>  <p>Install the ⑨ into the ⑥ to ensure that the ⑨ can automatically return to position The test the hand piece</p>	<p>Step 6</p>  <p>Connect ⑨ to the water supply.</p>

## The warranty will be void for any of the following reasons

- The product has been damaged through misuse, neglect or accident.
- The product has not been used in accordance with any applicable instruction guide.
- The purchaser has attempted to modify or repair the product.
- The product is not installed by a Registered Plumber.