

SENSE Basin Mixer

Installation Instructions & User Guide

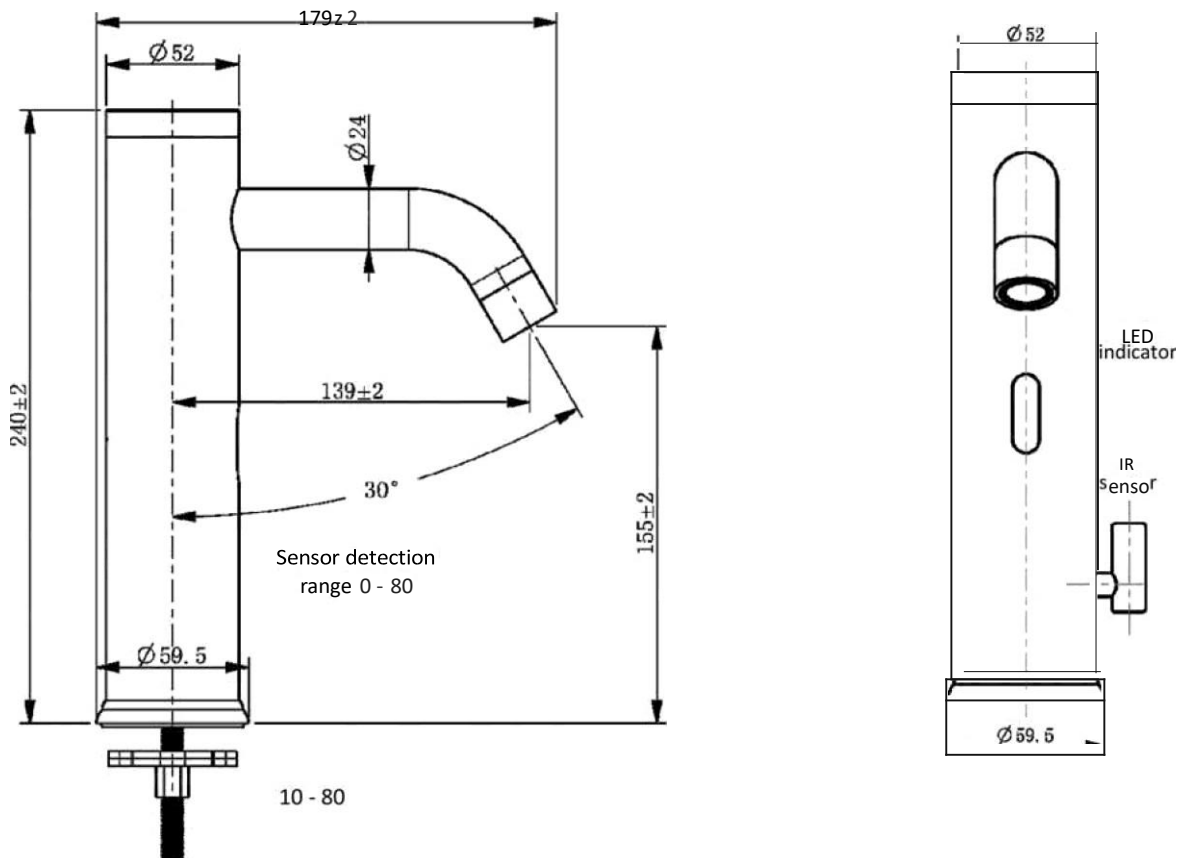
(Please keep this booklet for future reference)

(Installer, please ensure instruction with the user)

Your mixer tap is designed with a high precision hand distance detection infrared sensor. For a quick successful installation, please use these instructions as guidance.

After installation, this booklet should be left with the user for their operation and maintenance use.

(All units in mm)



IMPORTANT

Installation Person	<p>In accordance with Australian standards requirements, all tapware must be installed by a licensed plumbing contractor.</p> <p>Installation requirements of AS/NZS 3500.1 should be observed.</p>
Before Installation	<p>All connecting pipes must be thoroughly flushed prior to installation to ensure foreign matter will not block the tap and its regulating device, reducing water flow.</p> <p>Isolating stop taps must be fitted to the hot and cold supply connections in accordance with local authority installation codes.</p> <p>Not recommended for gravity feed, tank water or bore water systems.</p>
Water Pressure	<p>Hot and cold water pressures should be equal. Inlet pressure range 150-550kPa</p> <p>Where water pressure exceeds 500kPa, pressure limiting devices should be installed</p> <p>NOTE: it is a requirement of AS/NZS 3500.1 Clause 3.3.4 that on new installations, the maximum operating pressure at any outlet within a building must not exceed 500kPa.</p>
Water Temperature	<p>This mixer has low flow rate complying with WELS 6 star.</p> <p>It may not be suitable for connecting to certain appliance such as Instantaneous water heater, Solar water heaters, some thermostatic mixing or tempering valves. Check with manufacturer of product if in doubt.</p>
Prior Operation	<p>Aerator must be fitted and tightened to prevent removal by hand.</p>
Battery	<p>This product requires 4 x 1.5V AA batteries. Alkaline type is recommended. Keep batteries out of reach of children and animals.</p> <p>Replace batteries as soon as practicable after the low battery blinking warning is observed.</p> <p>Only use batteries that are intended for the product. Do not mix old and new batteries, different brands or types.</p> <p>Do not attempt to short-circuit, damage, dismantle or deform batteries or the battery compartment. Do not attempt to charge non-rechargeable batteries.</p> <p>Do not expose batteries or the battery compartment to heat, fire, or any type of liquid.</p> <p>In the event of a leaking battery, do not allow liquid to come into contact with eyes or skin. If exposed to liquid, rinse with plenty of water and seek medical advice.</p> <p>If the product is to be unused for a long period, the batteries should be removed.</p> <p>Consumed batteries should be handed in for recycling in accordance with local environmental regulations for waste disposal.</p> <p>WARNING! If a battery has been swallowed or if you suspect that a battery has been swallowed, seek immediate medical attention!</p>

SPECIFICATION & OPERATION

Water Pressure	Dynamic pressure maximum 700kPa Static pressure maximum 800 kPa
Water Temperature	Maximum hot water temperature 75°C
Mount Surface Thickness	10 min. - 80 max. mm
Hole Size	32 min. — 45 max. mm
Battery Holder	Seal Rating IP44
At Operation	Maximum power 3.6mW
Standby Power	Maximum power 0.18mW
Lifetime	Approx. 500,000 cycles (on-off)
Sensor Operation	<p>Maximum hand detection range is 8cm. Automatic water cuts off at 10 seconds. Detection range / IR window to the point right behind spout water out. Blink 1 time at hand detected. (Turn water On/Off alternatively) Blink 5 times indicating battery low. Blink 20 times if battery level too low to perform any operation.</p>
Setup Timer	<p>Default setting, can be programmed as per section below</p> <p>Connect battery and within 30s wave hand 3 consecutive times, interval less than 3s. The product exits the initial mode and enters the programming mode. Sensor LED will blink continuously. (The interval between two adjacent valid hand detected cannot exceed 3s)</p> <p>After entering programming mode,</p> <p>Wave one time- 5s auto cut off- sensor blink 1 time.</p> <p>Wave again (2nd time)- 10s auto cut off- sensor blink 2 times. Wave again (3rd time)- 15s auto cut off- sensor blink 3 times. Wave again (4th time)- 60s auto cut off- sensor blink 4 times.</p> <p>If you wave again before 30s it will again move to 5s auto cut off mode.</p> <p>(After each mode if hand does not present after 30s last functioned mode will be saved. Automatic protection shuts off the water 60 +/- 10% seconds)</p>

CAUTION & MAINTENANCE

The water temperature is controlled by the position of the lever on the side of the tap. Be careful if you have recently used hot water since hot water may remain in the mixer tap even if the lever is in the cold-water position.

Children should only use the mixer tap in the company of an adult.

For daily cleaning of your mixer tap, use a soft cloth dampened with water and, if necessary, a mild dish soap or detergent. **Never use** scouring powder, abrasive cleaners, steel wool, calcium-dissolving detergents or detergents that contain alcohol. Rinse with water and dry/polish with a clean dry cloth.

To remove calcium deposits, use ordinary white vinegar diluted in water and rinse with water.

We recommend unscrewing the aerator and cleaning it now and then. If it has calcium deposits, wash it with vinegar solution.

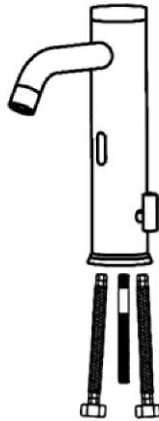
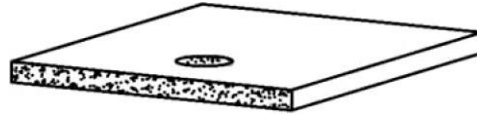
WARRANTY INFORMATION

This product carries a **2-year** replacement warranty, and **first year** in house labor warranty. Battery is not covered by warranty. The warranty will be void for any of the following reasons.

- The product has been damaged through misuse, neglect or accident.
- The product has not been used in accordance with any applicable instruction guide.
- The product has been modified.
- The product is not installed by a registered plumber.

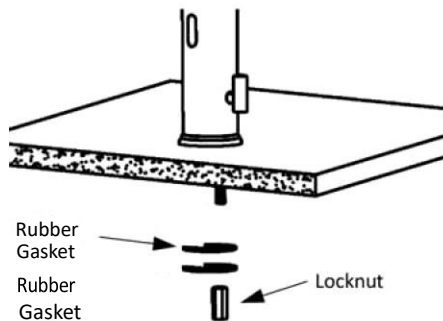
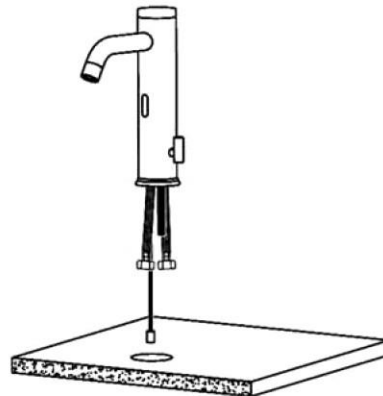
INSTALLATION

1) Ensure the mounting hole is between 32mm — 45mm in diameter and thickness between 10mm — 80mm



- 2) Screw hoses to the mixer as shown when viewed from the front. Red-Marking Hose on the front and Blue-Marking Hose on the back.
- 3) Screw leadscrew shorter thread length side to the mixer.

4) Fit hoses, sensor lead, leadscrew through the mounting hole and orientate the mixer correctly over the mounting hole.



5) Fit Rubber Gasket over Threaded Tail Screw and then the Metal Plate, use the Locknut to secure the mixer.

6) Connect Red-Marking hose to hot water supply and Blue-Marking hose to cold water supply.

