

Installation Instructions

CLOSE COUPLED TOILET SUITE

MOBI-III

Bottom Inlet

Installation of Toilet Seat and Cleaning It is recommended that toilet seat and cover be installed after all trades are finished

Note:

Installation to be in accordance with AS/NZS 3500 series of Standards and/or local regulations. All measurements for roughing-in should be taken from finished wall/floor. It is strongly recommended by the manufacturer that installation is carried out by a licensed plumber.

Cleaning Recommendations

The high quality vitreous china finish on all sanitary ware can be maintained by simply using mild soapy water and wiping over. Sanitary ware should not be cleaned with abrasive materials e.g. steel wool/scourers. Do not use any corrosive or abrasive cleaning agents containing acids or scouring agents as this may lead to surface damage. Bleaches can also discolour seats and hinges and therefore should not be used. If your toilet has metal hinges they should only be cleaned with a mild liquid domestic cleaner, with soft soapsuds or Steel & Chrome cleaner. After cleaning, rinse with clean water and polish with a clean soft cloth.

Close Coupled Pan Installation

Remove the pan from the box and assemble the plastic cistern fixing lugs into the pan cistern fixing holes, with the nuts at on the underside of the platform. (Fig 1)

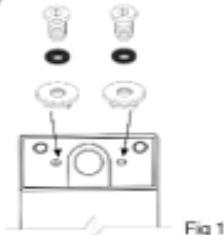


Fig 1

Place the pan in line with the center line of the waste outlet and mark the bracket hole center line on the floor. Remove the pan and drill and fix the brackets to the floor. (Fig 2)

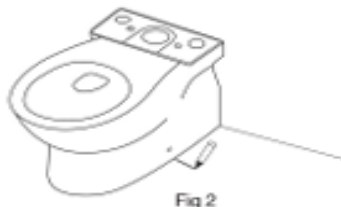
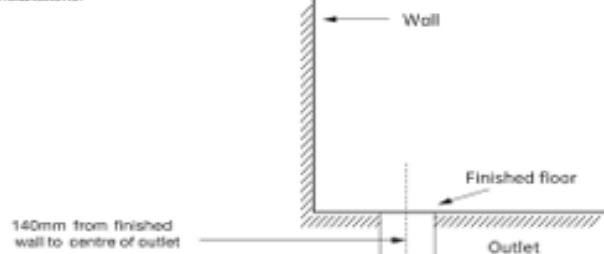


Fig 2

Close Coupled Pan Installation

The set out for installation should be 140mm from the finished wall for "S" trap installations.

Fig 3



Close Coupled Pan Installation

Align toilet pan with seal and lower gently. Press down firmly to compress seal. Level toilet and ensure clean engagement (Fig 4) buckle flush to ensure no leaks.

If the floor is sloping wedge the front on the pan up to fit flush against the wall. Fit the screw plugs through the bracket holes and screw the pan to the prefit brackets and cover with caps. (Fig 5) Seal around and under the foot with silicon.

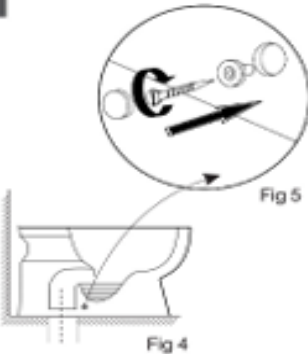


Fig 4

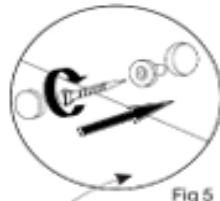


Fig 5

Cistern Installation

Place the cistern face down on top of the pan and ensure the rubber seal is positioned properly on the cistern outlet tail. (Fig 6) Lift the cistern into position and lower onto the pan cistern platform. (Fig 7) Locate the cistern fixing bolts through the cistern from the inside, and ensuring alignment with the pan and wall, tighten the screws. (Fig 8) Connect the water supply hose to the stop cock, turn on the water and ensure no leaks.

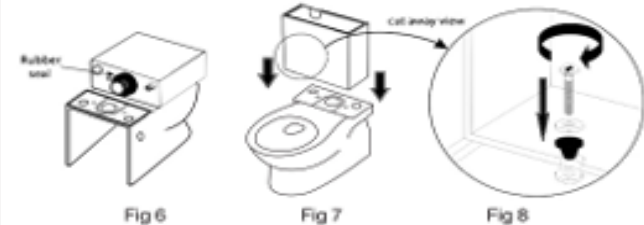


Fig 6

Fig 7

Fig 8

Water Supply Connection

Connect a stop cock (not supplied) to the nipple protruding from the wall. Connect the flexible hose from the stop cock to the inlet valve. Fill the cistern with water, flush and check for leaks. Fit the cistern lid and insert the button assembly through the lid and tighten into the outlet valve. (Do Not Over Tighten) (Fig 9) Once the silicon under the foot is set remove the wedge and add silicon to the gap.

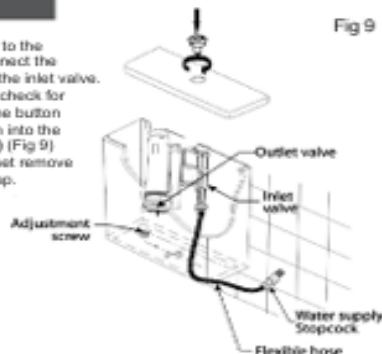


Fig 9

Seat Installation

Remove the seat and cover from it's box. Insert the top fixing rawl plugs into the seat bolt holes. Place the hinge blocks, without the stainless steel covers, over the rawl plugs and loosely fix the screw through the hinge blocks into the rawl plugs (Fig 10 and 11) Fit the seat and cover onto the hinge blocks by locating the fixing holes onto the hinge pins and push into place. Close the seat and cover onto the pan, and adjust the position in line with the rim of the pan. Tighten the screws. Open the seat and cover and depress the quick fix buttons to remove the seat and cover. Place the stainless steel covers over the hinge blocks (Fig 12) and replace the seat.



Fig 10

Fig 11

Fig 12